

LinBi

Thousands of paintings, pictures, audio, video and other data in Europeana depict aspects of biodiversity. Linking these objects to existing natural heritage data will support increased discovery and use of the content.

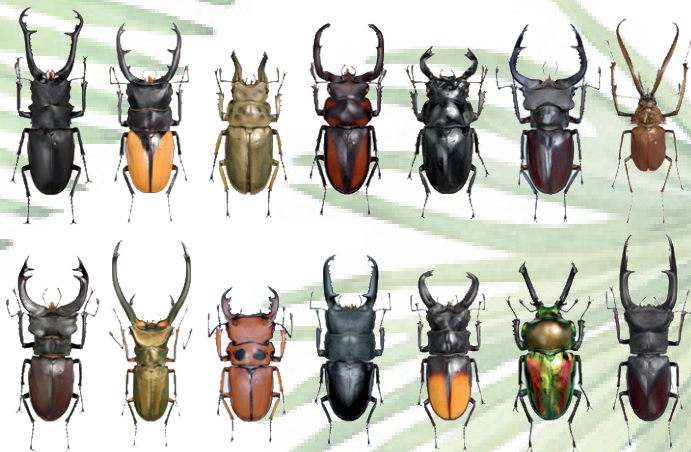
LinBi will introduce about 1.3 million new data items from the biodiversity and natural history domains into Europeana, including herbarium sheets, illustrations, nature sounds and video/film recordings, relating to biodiversity topics.

The LinBi consortium spans the entire biodiversity curation process, including content-providing museums, a biodiversity heritage content aggregator and a media organisation end user.

LinBi

The LinBi project focuses upon Europe's biodiversity content reflecting the enormous variety of life on earth, depicted in books, illustrations, specimen scans, photographs, sound recordings and video.

 linbi.eu
 [@AndLinbi](https://twitter.com/AndLinbi)
 info@linbi.eu



REAL JARDÍN
BOTÁNICO



Co-financed by the European Union
Connecting Europe Facility

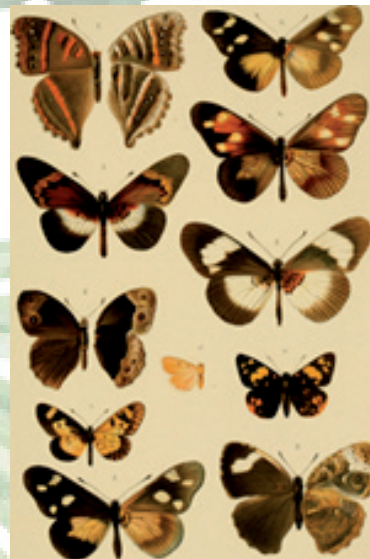
Biodiversity content is described using scientific terms, understood clearly by experts but presenting a barrier for non-experts, leading to low discoverability and reduced use of content.

LinBi will lower the barrier and enable users to find biodiversity objects without needing to understand scientific terminology. Users will be able to access biodiversity content more easily.



The LinBi data enrichment platform will link existing items of data with new items, creating 'enriched' information objects. These enriched objects will be processed by the OpenUp! Natural History content aggregator and delivered to Europeana.

Based on common terms, simple wordlists will enable the use of everyday language in the discovery of natural history content described on a scientific level.



Content linking will connect objects with related objects including film snippets, illustrations, images and audio. The LinBi enrichment platform will create new information objects containing all information relating to a specific topic or theme.

As a proof of concept, LinBi will provide 15,000 objects to Europeana via the enrichment platform.

